

Issue No 1



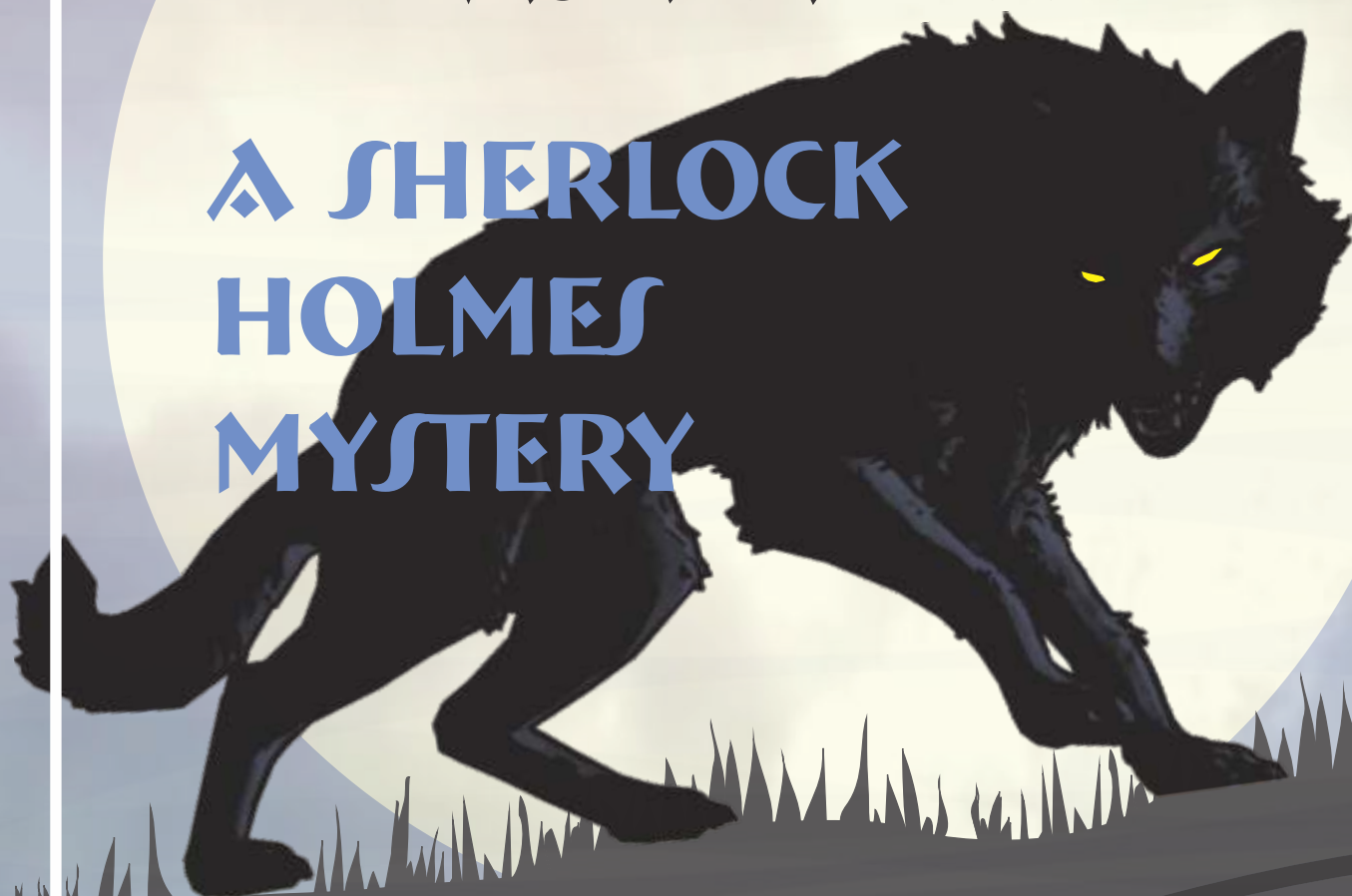
Mar 2024

R E P E R T O I R E

Newsletter of Adelaide's oldest theatre group

BASKERVILLE

A SHERLOCK HOLMES MYSTERY



BY KEN LUDWIG

DIRECTED BY GEOFF BRITTAIN

Sherlock Holmes is on the case. The male heirs of the Baskerville line are being dispatched one by one. To find their ingenious killer, Holmes and Watson must brave the desolate moors before a family curse dooms its newest heir.

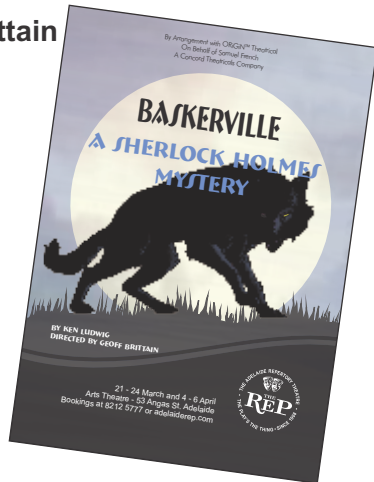
BOOK NOW at www.adelaiderep.com for:
Thu 21 March to Sat 23 March at 7:30pm
Sun 24 March at 4.00pm
Thu 4 April & Fri 5 April at 7:30pm
Sat 6 April at 2.00pm & 7.30pm
Tickets purchased from Box Office
\$28 and \$25 concession
Tickets purchased online
\$25 and \$22 concession incl. program

BASKERVILLE

Adelaide Repertory Theatre
presents
**'BASKERVILLE:
A Sherlock Holmes Mystery'**
By Ken Ludwig
Directed by Geoff Brittain



Get your
deerstalker cap on -
the play's afoot!
Comedic genius Ken
Ludwig (*Lend Me a
Tenor, Moon Over
Buffalo*) transforms
Arthur Conan
Doyle's classic '*The
Hound of the Baskervilles*' into a murderously
funny adventure.



Sherlock Holmes is on the case. The male
heirs of the Baskerville line are being
dispatched one by one. To find their ingenious
killer, Holmes and Watson must brave the
desolate moors before a family curse dooms
its newest heir.

Watch as our intrepid investigators try to
escape a dizzying web of clues, silly accents,
disguises, and deceit as five actors deftly
portray more than forty characters.

Does a wild hellhound prowl the moors of
Devonshire? Can our heroes discover the
truth in time? Join the fun and see how far
from elementary the truth can be.

dfk *We make it happen!*
gray perry
LEADING ACCOUNTANTS AND BUSINESS ADVISORS

REVIEWS

"*Baskerville* is a madcap sendup of what
you might hold dear about that Doyle classic,
done up in the style of *The 39 Steps*."

DC Theatre Scene

"The joy in watching [the] witty new play
'*Baskerville: A Sherlock Holmes Mystery*' is
not in solving the crime but in the plethora of
wildly imaginative characters you meet along
the way. By dispensing with British formality,
Ken Ludwig has given us a play that is
ingeniously funny and will keep you guessing
until the curtain call."

Broadway World

"Written by Tony-winning playwright Ken
Ludwig, the new play turns one of Holmes'
most famous mysteries, '*The Hound of the
Baskervilles*', on its head. Instead of a heady
whodunit, this production is a fast-paced
comedy."

Washington City Paper

"With this '*Baskerville: A Sherlock Holmes
Mystery*', the chase is on and with much joy...
What there is new is a freshness to this
particular Holmesian world. There is also
plenty of theatrical inventiveness conjured by
Director Geoff Brittain from playwright
Ludwig's script."

DC Metro Theatre Arts

**SA's own internet
guide to Theatre
in and around
Adelaide**



Supporting local theatre productions. What's On
in Drama, Musicals, Comedy and more

www.theatreguide.com.au

Official Website for the Theatre Assoc of South Australia

THE DIRECTOR GEOFF BRITTAIN

Geoff Brittain returns to direct the cast: Andrew Horwood (*'Laughter on the 23rd Floor'*, *'Well Shut My Mouth'*) as Sherlock Holmes with Sam Wiseman (*'The Pitmen Painters'*) as Doctor Watson. The protean Anita Zamberlan Canala (*'Haywire'*) Thomas Midena (*'I'm on Prescription Drugs'*) and Kim Clark (*'We Will Rock You'*, *'The Full Monty'*) portray more than 40 characters.



The creative team includes set construction Stanley Tuck and Barry Blakebrough, costumes Gillian Cordell, lighting designer Richard Parkhill, sound designer Geoff Brittain, properties Louise Lapans, hairdresser Kathryn Stevens. Assistant director Olivia Jane Parker, stage manager Leah Klemm and production manager Ray Trowbridge.

For more information and to purchase tickets visit adelaiderrep.com.

Performances will run through March 21 – April 6.

Become Involved Why not be part of the Rep Team

You don't need to be an actor to be involved with the Rep.

Every production is supported by teams of behind the scenes volunteers.

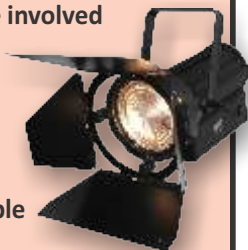
We need people who can prompt, paint, design, construct, show people to their seats; move sets, or sew costumes.

People who like to play with sound and lights, people to make tea and iron costumes.



Email your details to

enquiries@adelaiderrep.com



THEATRE ADAPTATION BY KEN LUDWIG

Ken has been writing since 1986 when his first play *'Lend me a Tenor'* produced by Andrew Lloyd-Weber for the West End and then in 1969 for Broadway. The play was nominated for seven Tony Awards including Best Play and won two.



Ludwig has adapted several plays from classical literature and stage.

'The Game's Afoot', Ludwig's comedy-mystery about the actor William Gillette, who originated the role of Sherlock Holmes, premiered at the Cleveland Play House in November 2011 and won the 2012 Edgar Allan Poe Award for Best Mystery of the Year. He continued his association with the Sherlock Holmes character in two additional plays. *'Baskerville: A Sherlock Holmes Mystery'* which premiered as a co-production at Arena Stage in January 2015 and at McCarter Theatre Centre in March 2015. *'Moriarty: A New Sherlock Holmes Adventure'* opened at the Cleveland Play House in April 2023.

A new mystery-comedy in the style of *'Baskerville'* and *'Moriarty'* titled *'Lady Molly of Scotland Yard'* will premiere in the 2024-25 theatrical season.

WANT TO EAT BEFORE THE SHOW?
Here is a great offer for Rep patrons

The Wakefield Hotel on Wakefield Street
offers 50% off the 2nd meal when you
produce your Rep tickets

MESSAGE FROM PRESIDENT DAVID SINCLAIR



Following a wonderfully successful 2023 for the Adelaide REP and the ARTS theatre, 2024 promises to deliver a showcase of high quality productions at the ARTS Theatre, featuring the finest actors and performers South Australia's theatre community has to offer.

This year, the REP has engaged some of the finest directors and production teams to bring to life our exciting 2024 season. Our first production '*Baskerville – A Sherlock Holmes Mystery*', directed by Geoff Brittain, kicks off our season in March and promises to take audiences on an hilarious intriguing journey as master crime solver Sherlock Holmes investigates the multiple murders of the Baskerville family. Geoff has assembled a powerhouse cast of five fine actors who expertly take on the roles of over 40 characters.

I am also pleased to welcome the Adelaide Fringe back to The ARTS theatre, further establishing our theatre as one of the preferred venues for live entertainment during one of the world's largest and finest arts festivals. I thank our theatre manager Cathy Reid for her tireless work engaging with new production companies as well as maintaining crucial relationships with our loyal regular hirers.

The "Arts Theatre Redevelopment Plan" is progressing although the scope of which is yet to be fully determined. We are establishing a working group comprising key stakeholders, contractors, consultants and experts who will be tasked with the responsibility of bringing the plan to fruition.

I have previously spoken many times about the funding opportunities to raise money for the redevelopment. The ARTS theatre is a community based theatre and therefore we believe the theatre community should also bear some of the responsibility in contributing to the raising of much needed funds. Therefore, in addition to patrons being able to make a donation to the "Redevelopment Fund" in the foyer, we are introducing a modest seat levy of \$1 on every ticket sold. For REP tickets the levy will be included as part of the ticket price. All funds raised will be for the sole purpose of the redevelopment.

I am genuinely excited for the future of the REP and the ARTS theatre and am so grateful for the support and hard work of each board member as well as Rose Vallen, Cathy Reid and the fantastic cohort of volunteers who willingly donate their own precious time, without whom we would not have a theatre company or a theatre.

Thank you dear people for your continued support of The REP and The ARTS theatre.

POSITIONS VACANT

SECRETARY

1. Call meetings of the Board in consultation with board members.
2. Prepare agenda in consultation with the Chairperson and send to all board members 7 days prior to the meeting.
3. Take minutes of meetings and send to board members and the Rep office within a week of the meeting.
4. Respond to all correspondence on behalf of the organisation.
5. Ensure thank you letters follow each production.
6. Prepare additional documents as required by the Board.
7. Additional activities as required to support the organisation.

*Out-of-pocket expenses incurred by the Secretary in the form of catering, hospitality, telephone, parking and stationery will be reimbursed by the organisation on presentation of receipts.

If you are interested,
contact us on: enquiries@adelaiderep.com



R E P E R T O I R E

Newsletter of Adelaide's oldest theatre group

PICS FROM REHEARSAL



Gilian Cordell's black and white images evoke the feeling of the bygone era.



Special thanks to the



for their assistance in the photo shoot



BASKERVILLE

A SHERLOCK
HOLMES
MYSTERY



Moore St Parking

\$10.00 Undercover parking
6pm 'til midnight

Located on Moore St
opposite the Arts
Theatre stage door!!



Floral Image

Flower rentals
for your home
or office

1300 136 066

for more information
floral-image@hotmail.com



VALE MALCOLM ELLIOT

ELLIOTT, Malcolm Stacey

Passed away peacefully in Adelaide on Sunday,
October 29, 2023. Aged 83 years.

Much loved Husband of Jill,
Father of Salenna, Penelope and Anton,
and Father-in-Law of Danny, Jeremy and Sarah.
Grandpapa of Isaac, Ellie, Jasper, Felix, Millie, Arabella and Henry.

Malcolm's diagnosis of Atrial Fibrillation (AF) in 2012 didn't impact his passion for volunteering and giving back to the community.

He was a staunch supporter of the Adelaide Repertory Theatre (The ARTS) for decades working as an actor and as a Board member, always cheerful and happy to give advice and support. He contributed financially to the company regularly, making a substantial contribution every year without fail and over the years has donated thousands of dollars to the theatre. Look for his name on our Sponsor Board in the foyer.

Malcolm's last performance at the Rep was in the melodrama *'Love Rides the Rails'* where he played the villainous, smug, oily Simon Darkway. The dastardly Simon Darkway wanted to take over the railway in order to get the right-of-way to bring his own Middletown and Rocky Mountain Railroad through. He also happened to own the bank that held the Hopewell's mortgage. Malcolm ensured the audience had a fun night out, with plenty of chances to hiss, boo, call out, applaud him and enjoy a belly laugh.

Malcolm worked in Samoa for two years in the 1980s with Australian Volunteers Abroad. He generously donated to Australian Heart Research (AHR), hoping that further medical advancements would help others with heart disease.

Malcolm continued to give back where he could and was a self-confessed 'serial volunteer', donating his time to many different organisations and charities.

He worked in the fundraising sector for over 20 years and volunteering his time to many worthy causes was his way of helping the community and contributing where he could.

The Adelaide Repertory Theatre is thankful to Malcolm, who made it possible for us to continue to provide quality community theatre to South Australians.

VALE Malcolm Elliot



GET WELL SOON

To the very lovely and talented
Lindy LeCornu.

Best wishes and hoping
you're feeling yourself again
very soon.

Lindy we know you have the power to overcome anything because you bring with you always such optimism. We're thinking of you and sending get-well sunshine your way because you always brighten our days. From all of us at the Rep.

Lindy has appeared in so many Rep shows that we can't count them all. Most recently she appeared on the Rep's production of *'An Ideal Husband'* where she played a gender-bending butler to the households with a delicious mix of loyalty, duty, unflappable composure, and barely disguised contempt!



The Adelaide Repertory Theatre Inc.

Patron: Her Excellency the Honourable
Frances Adamson AC, Governor of South Australia

Venue: ARTS Theatre, 53 Angas St, Adelaide 5000

Ph: 8212 5777 **Web:** www.adelaiderep.com

Email: enquiries@adelaiderep.com

Rep Photography: Richard Parkhill

Editor: Penni Hamilton-Smith

Board:

David Sinclair, Penni Hamilton-Smith,
Sue Franks, Linda Williams, Elizabeth Olsson,
Sam Christodoulou, Lise Windsor, Jaye Antoney.

VOLUNTEER SEAMSTRESS NEEDED AT THE REP



What Does it Take?

You need to have:

- good sewing skills and manual dexterity
- an eye for style and colour
- an understanding of fashion and period clothing
- attention to detail
- perseverance
- good people skills
- good communication skills.

You should be:

- interested in the performing arts and its history
- helpful, calm and tactful
- well organised
- inventive and flexible
- able to work as part of a team
- able to work quickly, to deadlines and stay calm under pressure.



Costume is the distinctive style of dress or cosmetic of an individual or group that reflects class, gender, profession, ethnicity, nationality, activity or epoch.
In short costume is a cultural visual of the people

Wardrobe assistants help to maintain the costumes for actors in theatrical productions. They make sure that the costumes look authentic.

The Work

There are two wardrobe requirements: the 'making wardrobe', someone who is able to research and acquire or create the costumes, and the 'running wardrobe', the person who organises and maintains the costumes and assist in the changes of costumes during the production. We have two wonderful young women who take care of the "running wardrobe" but they need assistance with the "making wardrobe".

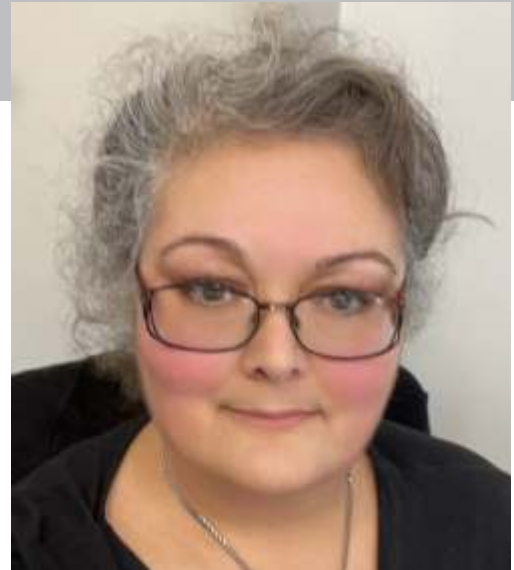
You could be:

- searching specialist shops for clothes and accessories to hire or buy
- working to deadlines, helping to make up the costumes and adapting the costumes to fit by hand and machine sewing
- sometimes ageing and distressing garments to make them look dirty, old or worn
- packing and unpacking clothes, wigs and other accessories
- In theatre, you will have some evening & weekend work during performances which can last for weeks.
- You might get several weeks off in between shows to make up for these long hours.
- Work areas can be cramped and cluttered.
- Work may be on a short basis, lasting a few weeks or months, until a production is finished.

If you are interested, contact us on: enquiries@adelaiderrep.com

MESSAGE FROM CATHERINE REID ARTS THEATRE MANAGER

There is a world of entertainment coming up at The Arts Theatre! This Adelaide Fringe, brace yourself for laughter with the hilarious Dr Ahmed, performing the award-winning *'Dr Ahmed gets Hitched: My Big Fat Greek Pakistani Gay Wedding'*. Join us for a week-long music extravaganza curated by GC @ The Arts, featuring an eclectic lineup of sensational bands. Dive into the world of comedy with Peter Maddern's *'Cypress Point'*, a side-splitting tale about golf.



Catherine Reid

Post Fringe, immerse yourself in captivating productions like The Rep's *'Baskerville: A Sherlock Holmes Mystery'* and *'Moonlight and Magnolias'*, Therry Theatre's seasons of *'Shortcut to Happiness'* and perennial favourite *'Jersey Boys'*, The Gilbert and Sullivan Society's enchanting *'Oklahoma'*, The Metropolitan Musical Society's kooky *'The Addams Family'* and don't miss the mid-year grand celebration of Marie Clark Musical Theatre's 50th anniversary with the timeless classic *'The Music Man'*.

These are just a few of the sensational performances scheduled this year at The Arts Theatre – where unforgettable moments come to life!

We are thrilled to update you on the transformative changes at the theatre made possible by our incredible donors. The generosity of our donors has allowed us to undertake major roof repairs, install a new air conditioning unit in the Thomas Nave rehearsal room after the previous unit failed during summer, and undertake essential and overdue maintenance of the fly system, ensuring a secure, safe, and comfortable space. A permanent operations point has been established in the auditorium, streamlining our operations for seamless performances. Your contributions have made a lasting impact, and we are immensely grateful for your continued support.

Now, we seek support in an essential backstage endeavour. The intricate work of our fly system is paramount for both the safety and creativity of our productions. The past generosity of donors has allowed us to replace the dangerous wooden battens with steel, repair and replace the pulley system on 17 of our 30 lines and deep clean and audit the entire system. We are seeking additional contributions to complete the essential maintenance of the pulley system (\$70k), upgrade to our lighting winches (\$15k) and install cradles and weights on a further 20 lines (\$30k).

Additionally, we are seeking donations to assist with upgrading our aging lighting units, ensuring our stage remains brilliant. We are immensely grateful for your ongoing support, which keeps the magic alive.

Your generous contributions can shape the future of our space, creating the longed for upgrades in disability access, comfort, seating, staging, and state-of-the-art equipment. Give by specifying whether your donation supports current essential projects or adds to our fighting fund for long-term development. Every contribution brings us closer to creating a space that exceeds the expectations of our diverse community. Together, let's build a space resonating with inclusivity, comfort, and artistic excellence. Thank you for being our partners in this exciting journey – we can't do it without you!

National Railway Museum

Open Daily/10am – 4:30pm

Adult \$17

Concession \$10

Child 5-15 yrs and with
an adult \$7

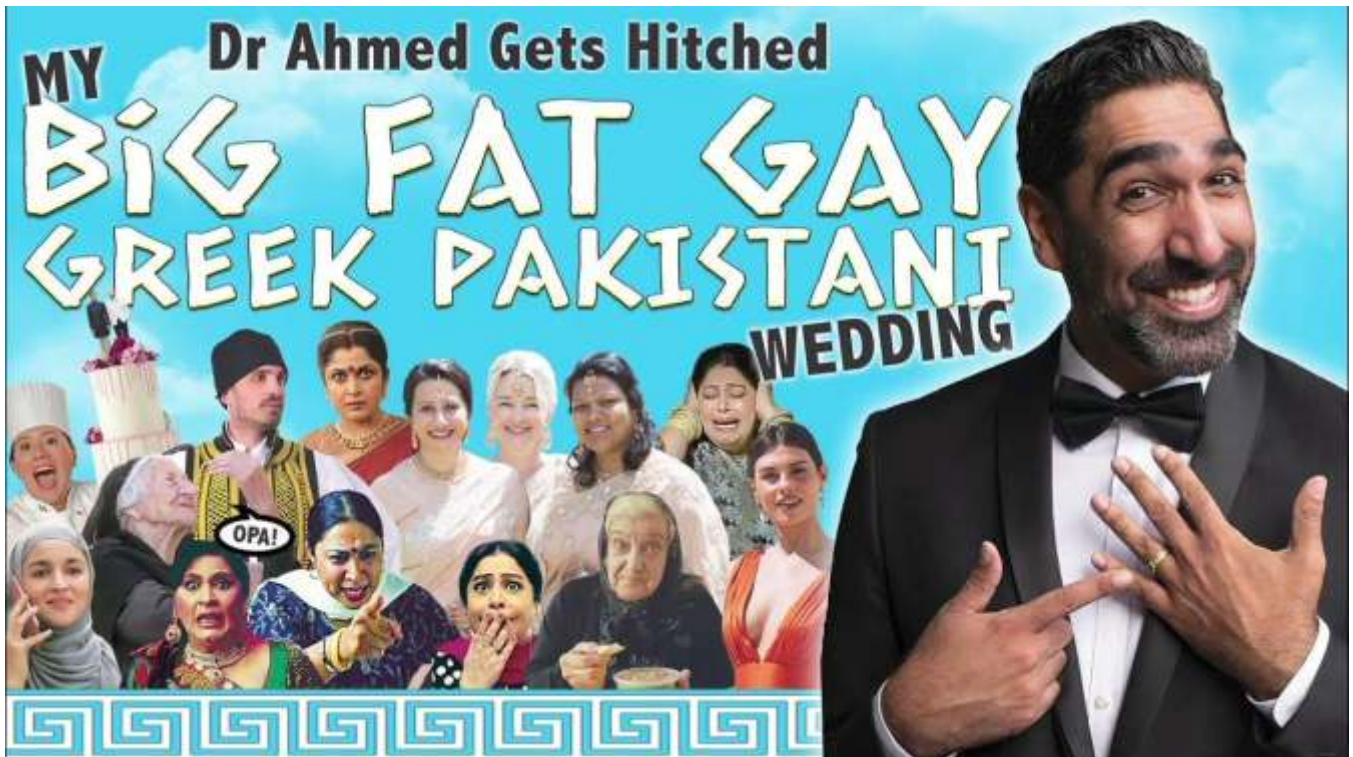
Family 2 adults and up to
3 children \$40

76 Lipson St Port Adelaide
T. 8341 1690 W. nrm.org.au

[f @nrmportadelaide](https://www.facebook.com/nrmportadelaide)



Australia's largest undercover railway museum - comprises two large pavilions, housing numerous exhibits - locomotives, passenger carriages, railcars, and displays of railway memorabilia. Small train rides run every day, and are included with admission.



Guaranteed to make you laugh, cry and possibly wet yourself, make sure you come prepared for this award-winning emotional rollercoaster!

Be immersed in Dr Ahmed's epic quest of defying odds, finding love and tying the knot. Dating apps, marriage brokers, angry aunties and a missing MC- this saga, worthy of Greek mythology, has it all. After all, what could possibly go wrong when you are planning an epic same-sex inter-faith cross-cultural Greek-Pakistani wedding?

Be sure to dress for the occasion- category is 'BAFTAs meets Bollywood' and there is a prize for the best outfit each show. Previous seasons have all SOLD OUT, so BOOK NOW. Opa!

"The art of storytelling dripping in comedy" ★★★★★ *Out In Perth*
"Leave with a tummy sore from laughing" ★★★★★ *Perth Happenings*
"Beautifully crafted" ★★★★★ *Stage Whispers*

FRINGEWORLD weekly comedy award winner 2021 & 2022



**GIVE AWAY
10
DOUBLE
PASSES**

10 double passes to the Matinee Performance, Saturday 17th February at 2pm to the first 10 responses to manager@artstheatresa.com

John Martin presents



REMEMBERING THE MASTER

Join pianist, singer and entertainer John Martin in this rich entertainment; a witty and touching journey with music and spoken word through the life and creative brilliance of Noel Coward, the man they called The Master. Relive his crackling humour, warmth and full-hearted observation of life in songs such as *"Don't Put Your Daughter On The Stage, Mrs Worthington"*, *"London Pride"* and *"Mad Dogs And Englishmen"*!



Join this extraordinarily diverse musician - solo pianist, accompanist and composer John Martin - as he combines acting, poetry, music and singing, to give you a delicious glimpse into the world of Noël Coward, for an entertainment that will live in your heart.

johnmartinpianist.biz



**Wednesday 6th March 2024
at 6.30pm**

The GC - Grand Central at The Arts Theatre

**GIVE AWAY
5
DOUBLE
PASSES**

5 double passes to the
first 5 people to email
a request to
manager@artstheatres.com

tickets \$43